



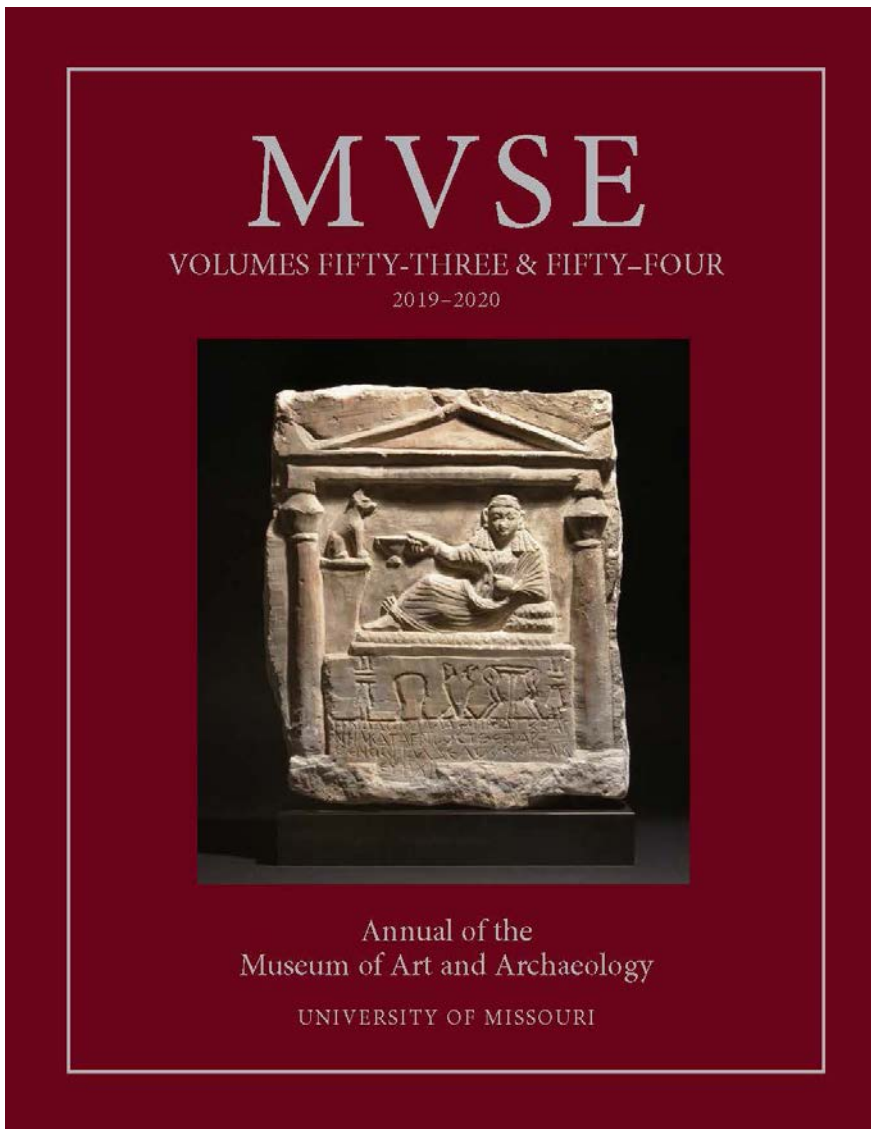
Our Museum Galleries have REOPENED!

*We are concerned with your health and well-being during this pandemic.
Visitors to the galleries are **required** to wear masks and practice social distancing.*

No more than six (6) individuals in a group.

No more than twenty (20) individuals allowed in the Museum at any one time.

Museum Friday Feature



The latest issue of *MUSE* is now available in PDF format and online. Review 2019 and 2020 reports, acquisitions, exhibitions, and events. This issue includes the following articles:

- *The Funerary Stele of Heliodora, Astrologer*
by Roger S. Bagnall, Cathy Callaway, and Alexander Jones
- *Ella Baché Brummer: Donations for the Purpose of Teaching*
by Christina Wytko Marchington
- *A Brief History: The Museum of Art and Archaeology*

The Museum is **FREE** and ADA accessible

Located at MIZZOU North | 115 Business Loop 70 West | Columbia, MO 65211 | (573) 882-3591



Visitors to the Museum are **REQUIRED** to wear masks and practice social distancing. Groups are limited to no more than 6 individuals.

Website: <http://maa.missouri.edu>

Gallery Hours
Tuesday - Friday: 9am to 4pm
Saturday & Sunday: Noon to 4pm
CLOSED Mondays