



# Ad Hoc Film Series



February  
thru  
August, 2020



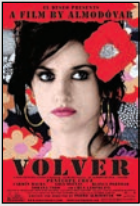
Museum of Art  
and Archaeology  
University of Missouri

**Gallery Hours:**

Tuesday–Friday, 9am–4pm  
Saturday and Sunday, Noon–4pm  
Closed Mondays  
and University holidays

115 Business Loop 70 West, Mizzou North  
For additional information, please call (573) 882-3591  
or visit our website at <http://maa.missouri.edu>

**FREE** and ADA accessible



## February 9, Sunday

*Volver* (2006)

Directed by Pedro Almodóvar  
Starring Penélope Cruz and Carmen Maura  
After her death, a mother (Cruz) returns to her home town in order to fix the situations she couldn't resolve during her life.

Films shown at 2:00pm

707 Mizzou North

**FREE and  
Open to the public  
ADA Accessible**



## March 8, Sunday

*Séraphine* (2008)

Directed by Martin Provost  
Starring Yolande Moreau and Ulrich Tukur  
Based on the life of French painter Seraphine de Senlis (Moreau).



## April 19, Sunday

*Truly, Madly, Deeply* (1990)

Directed by Anthony Minghella  
Starring Alan Rickman and Juliet Stevenson  
A woman (Stevenson) dealing with inconsolable grief over the death of her partner gets another chance when he (Rickman) returns to earth as a ghost.



## May 10, Sunday (Mother's Day)

*The Agony and the Ecstasy* (1965)

Directed by Carol Reed  
Starring Rex Harrison and Charlton Heston  
The biographical story of Michelangelo's (Heston) troubles while painting the Sistine Chapel at the urging of Pope Julius II (Harrison).



## June 14, Sunday

*Witness for the Prosecution* (1957)

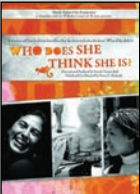
Directed by Billy Wilder  
Starring Marlene Dietrich, Charles Laughton, and Tyrone Power  
A veteran British barrister (Laughton) must defend his client (Power) in a murder trial that has surprise after surprise (Dietrich).



## July 12, Sunday

*Journey to Italy* (1954)

Directed by Roberto Rossellini  
Starring Ingrid Bergman and George Sanders  
An unhappily married couple (Bergman and Sanders) attempts to find direction and insight while vacationing in Naples.



## August 9, Sunday

*Who Does She Think She Is?* (2008)

Co-directed by Pamela Tanner Boll and Nancy Kennedy  
Starring Camille Musser and Mayumi Oda  
A documentary of women who are often forced to choose between mothering or working, but five fierce women refuse to choose.