

# VARIABLE ATMOSPHERES

## WEATHER IN ART

**S**ome of the most arresting attempts to capture the dynamic, ever-changing character of landscapes were created using materials that are dynamic and changeable. This exhibition presents depictions on paper of the ephemeral qualities of skies and environments in media that are themselves vulnerable to environmental variation and susceptible to change over time. Inks and pigments of prints, drawings, and watercolors can fade, darken, or even change hue. Photographs and photographic negatives are by definition created from light and are therefore reactive to light. Paper can become bleached, abraded, wrinkled, moldy, and torn. With these sensitive and impermanent materials artists have created stunning views of the transitory natural world. In the cross-cultural selection of works included here, elusive skies and evanescent effects of light and humidity are the subjects even more than the places beneath them. Landscape only defines a fraction of their subject; they are in a sense aircapes. As these artworks suggest, weather phenomena have captivated humanity's attention throughout the ages. In our era, with the warming of our planet and consequent fluctuations in weather in every climate zone, the conditions of our environments are in the forefront of both our lived experiences and our imaginations.



Geertruydt Roghman (Dutch, 1625–before 1657)

*Sloterdijck on the West Bank (Sloterdijck aen de westkant)*, ca. 1640–52

From the series *Pleasant Landscapes (Plaisante Lantschappen)*, plate 6

After a design by Roelant Roghman (Dutch, 1627–92)

Etching, engraving, and drypoint on paper

Published by Claesz Jansz. Visscher (Dutch, 1586/87–1652)

Gilbreath-McLorn Museum Fund (2001.14)



Elisha Kirkall (English, ca. 1682–1742)

After Willem van de Velde II (Dutch, 1633–1707)

*A Ship Firing on Another further Offshore*, ca. 1725–30

Mezzotint on laid paper

Acquired with funds donated by Museum Associates and Tom and Alice Payne (2012.4)





Jacques Philippe Le Bas (French, 1707–63)

After Julien-David Le Roy (French, 1724–1803)

and Louis-Joseph Le Lorrain (French, 1715–59)

***View of the Ruins of a Temple at Corinth (Vue des Ruines d'un Temple de Corinthe)*, 1758**

From *The Ruins of the Most Beautiful Monuments of Greece (Les ruines des plus beaux monuments de la Grèce)*

Engraving on paper

Gift of Museum Associates in honor of Dr. Jane C. Biers (2006.8)



Richard Earlom (English, 1743–1822)  
After Claude Lorrain (French, 1604–82)  
*Pastoral Landscape with the Arch of Titus*, 1776  
Etching and aquatint on paper  
Transferred from the Old Collection (X-70)





Utagawa Hiroshige I, called Ando (Japanese, 1797–1858)

***Yokkaichi: Mie River***, 1833–34

From the series *Fifty-three Stations of the Tōkaidō*

Color woodblock print on paper

Published by Takenouchi Magohachi (Hoeido)

Gift of Mr. Alvin John Accola in memory of his wife Katharine Mize Accola (68.34)



Utagawa Hiroshige I, called Ando (Japanese, 1797–1858)

*Tsuchiyama: Spring Rain*, 1833–34

From the series *Fifty-three Stations of the Tōkaidō*

Color woodblock print on paper

Published by Takenouchi Magohachi (Hoeido)

Gift of Mr. Alvin John Accola in memory of his wife Katharine Mize Accola (68.35)





Robert Brandard (English, 1805–62)  
After Joseph Mallord William Turner (English, 1775–1851)  
*Snowstorm – Steamboat off a Harbour*, 1859  
Steel engraving on paper  
Transferred from the Old Collection (X-111)





Utagawa Hiroshige II, called Shigenobu (Japanese, 1826–69)  
*Ochanomizu*, 1861

From the series *Views of Famous Places in Edo*

Color woodblock print on paper

Published by Fujiokaya Keijiro (Shorindo)

Woodblock carved by Koizumi Kanegoro (Hori Kane)

Gift of Mr. Alvin John Accola in memory of his wife Katharine Mize Accola (68.26)



Ludovic Léprieux (French, 1839–89)

*A Stormy Landscape*, 1870

Etching and plate tone on paper

Gilbreath-McLorn Museum Fund (2008.14)





Félix Hilaire Buhot (French, 1847–98)

*Landing in England (Un Débarquement en Angleterre)*, 1879

Etching, drypoint, aquatint, roulette, and spirit ground on paper  
Gilbreath-McLorn Museum Fund (2016.8)





Félix Hilaire Buhot (French, 1847–98)  
*The Country Neighbors (Les Voisins de Campagne)*, 1879–80  
Etching, drypoint, and aquatint on laid paper  
Gilbreath-McLorn Museum Fund (2008.15)





Julius J. Lankes (American, 1884–1960)  
After Charles Burchfield (American, 1893–1967)

*The Whirling Wind*, 1923

Woodcut on paper

Gift of the children of J. J. Lankes (2007.16)





Julius J. Lankes (American, 1884–1960)  
After Rockwell Kent (American, 1882–1971)  
*Doremus - Storm*, 1930  
Woodcut on paper  
Gift of the children of J. J. Lankes (2007.32)



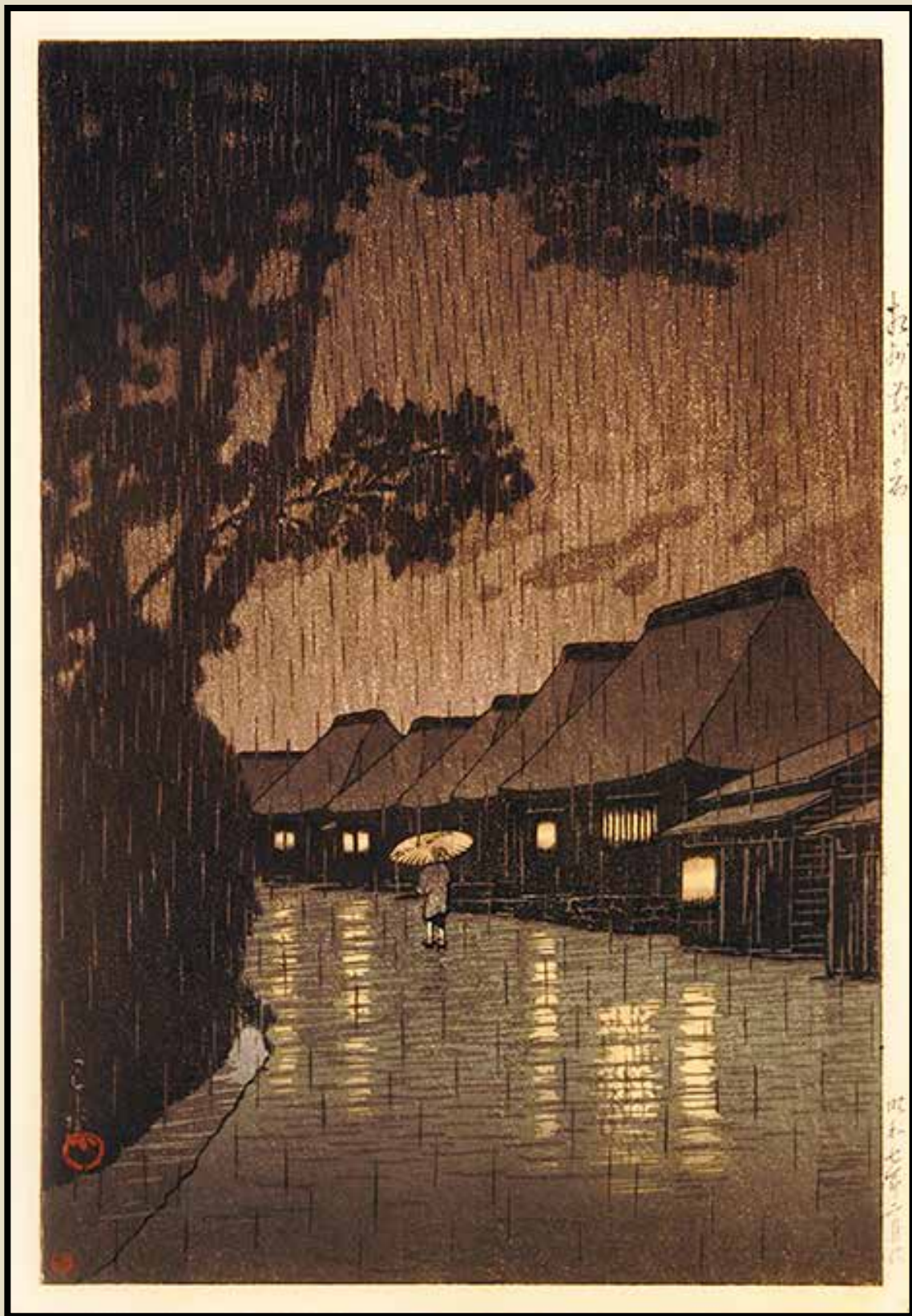


Arthur Feudel (German-American, 1857–1929)

*Fishing Boats on the Beach at Katwijk aan Zee*, ca. 1929

Watercolor and gouache on paper

Gift of Mr. and Mrs. Donald N. Wilber (75.51)



Kawase Hasui (Japanese, 1883–1957)

*Rain at Matsuzaki (Sōshū Maekawa no ame)*, 1931–32

From the series *Selected Views of the Tōkaidō (Tōkaidō fūkei senshū)*

Color woodcut on paper

Published by Watanabe Shozaburo (Japanese, 1885–1962)

Gift of Doreen Canaday Spitzer in memory of Ward and Miriam Canaday (76.157)





Kawase Hasui (Japanese, 1883–1957)

*Rainy Season at Ryoshimachi, Shinagawa*, 1931–32

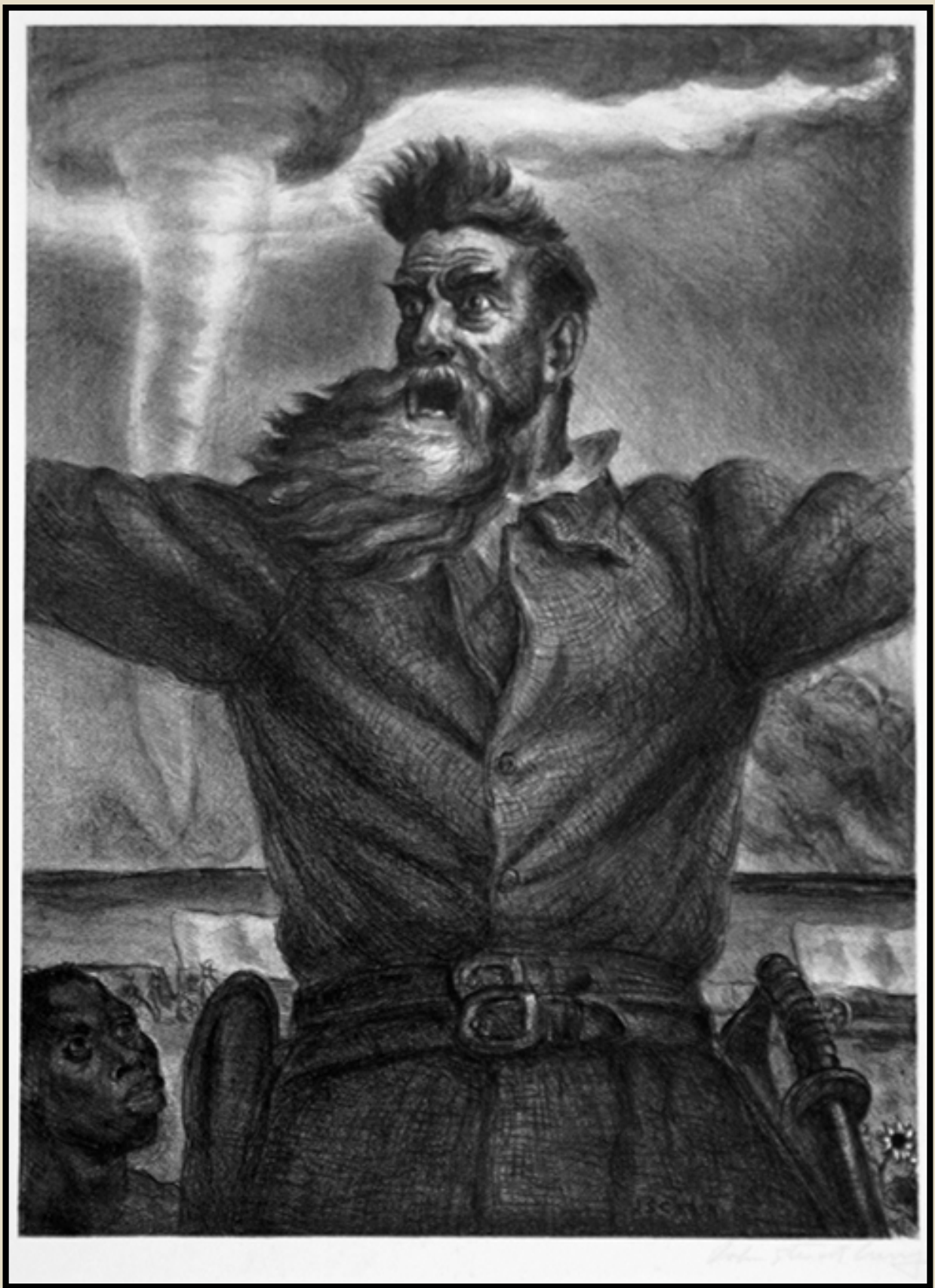
From the series *Selected Views of the Tōkaidō* (*Tōkaidō fūkei senshū*)

Color woodblock print on paper

Published by Watanabe Shozaburo (Japanese, 1885–1962)

Gift of Prof. Jerry Berneche and his wife Joanne Zucco Berneche (2016.2)





John Steuart Curry (American, 1897–1946)

*John Brown*, 1939

Lithograph on paper

Published by Associated American Artists, New York

Gift of Mrs. Donald Alexander Ross (93.15)



Aldoph Dehn (German-American, 1895–1968)

*Snow Fields*, 1950s

Watercolor on paper

Gift of the estate of the artist, through the efforts of Sam F. and June S. Hamra and the Harmon-Meek Gallery (2014.193)



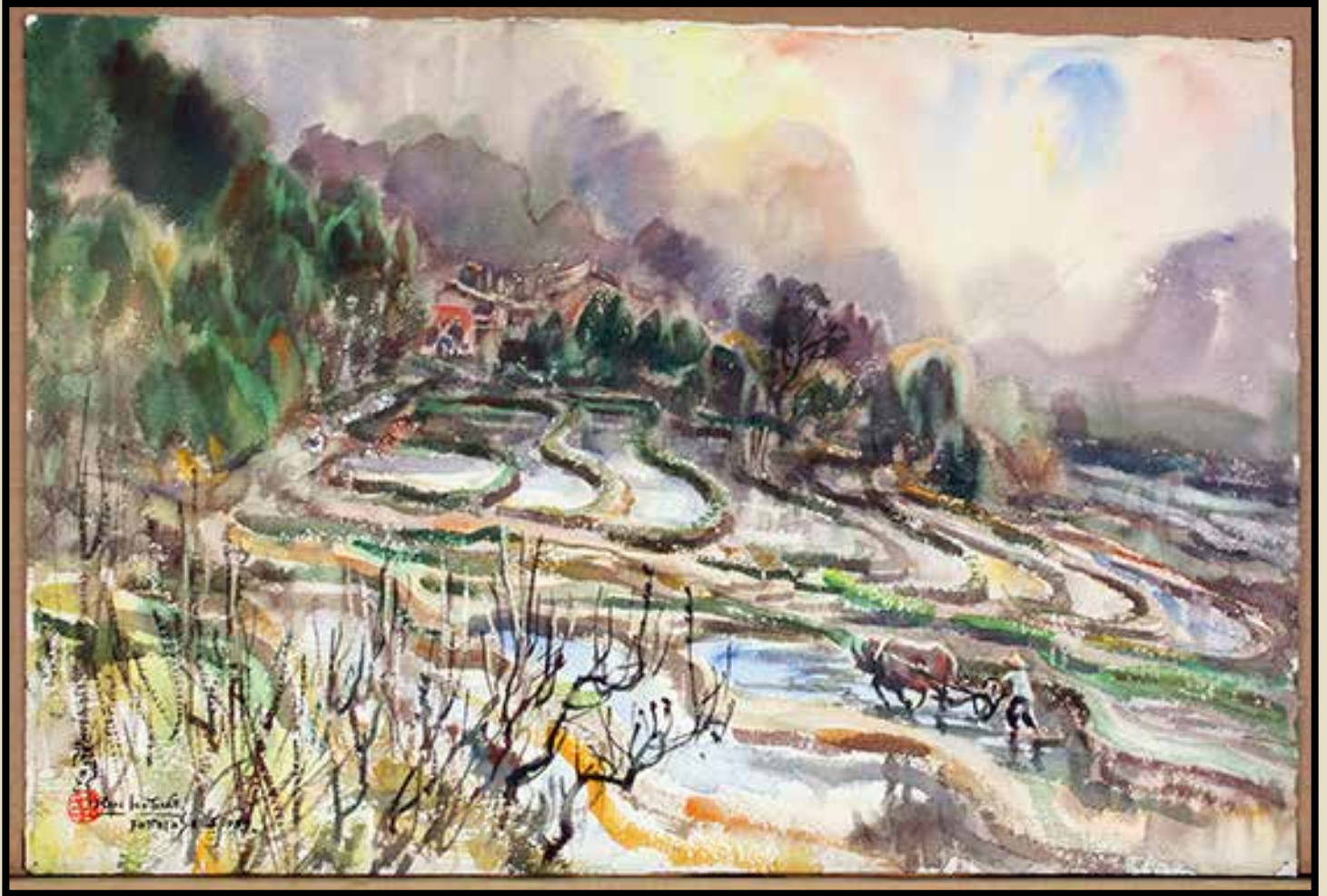
Marjorie Liebman (American, 1911–2007)

*Acapulco Nite Theme*, 1958

Watercolor on paper

Gift of the Betty Parsons Foundation (85.79)





Ran In-Ting (Chinese, 1903–79)

*Rice Paddy*, 1959

Watercolor on paper

Gift of Margaret Carney Long and Howard Rusk Long in memory of the Boone County Long Family (81.28)



Mel Kushner (American, 1915–91)

*Untitled*, mid-20<sup>th</sup> century

Watercolor on paper

Gift of Cathy Callaway in honor of Joan and Rolland Callaway (2018.5.2)



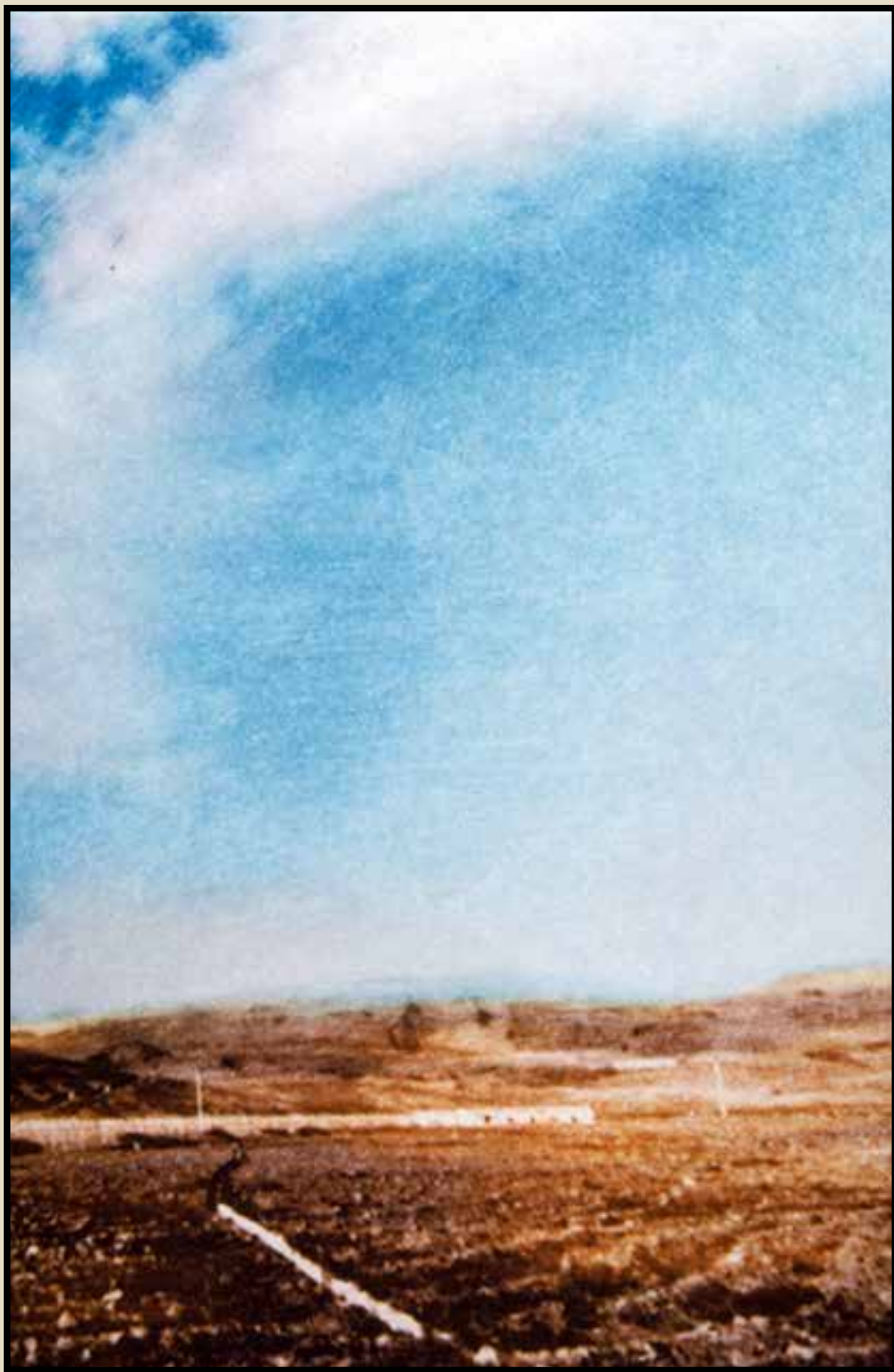


Maurice de Vlaminck (French, 1876–1958)

*Autumn Road II*, mid-20<sup>th</sup> century

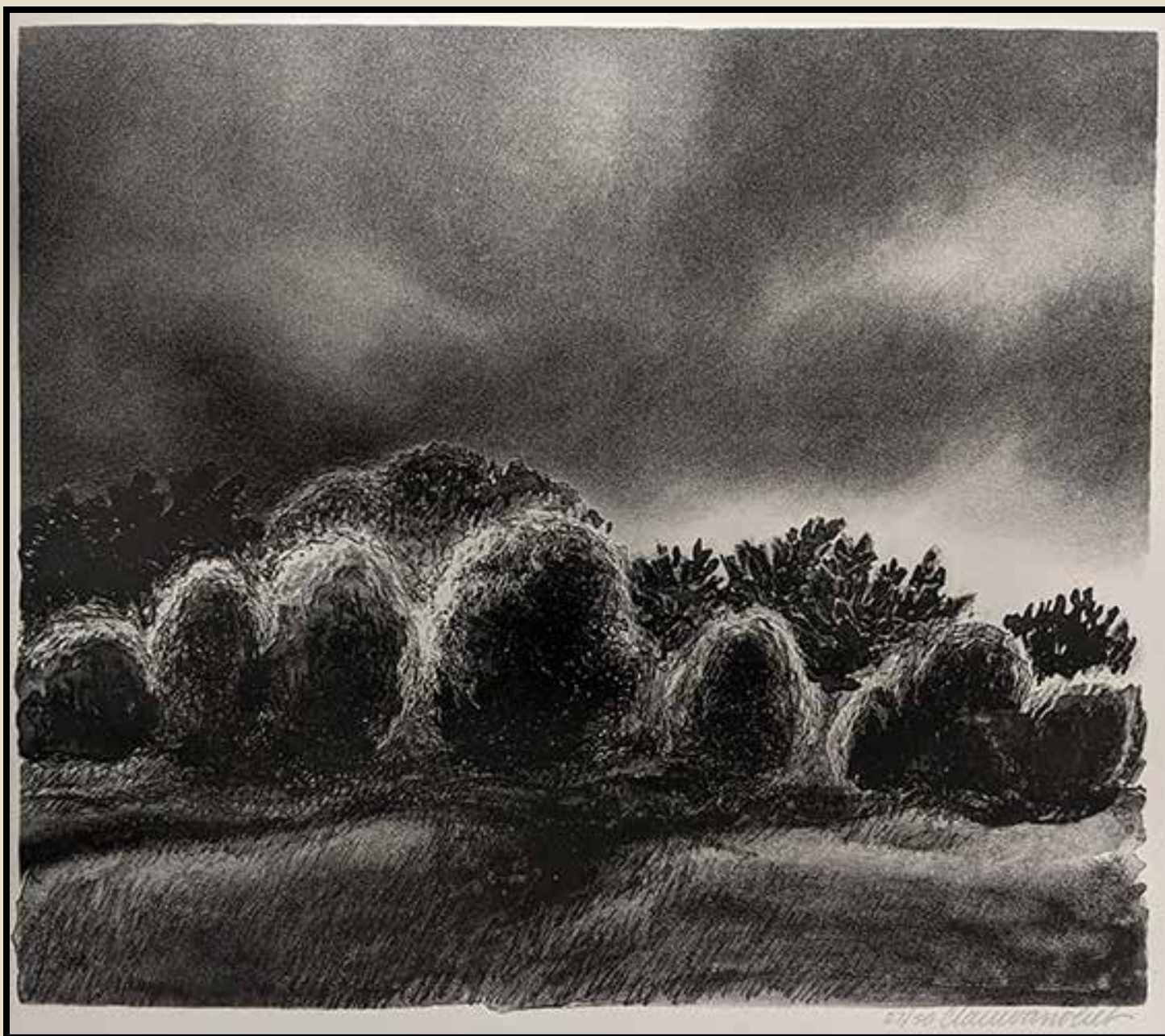
Color lithograph on paper

Museum purchase (71.106)



Gerhard Richter (German, b. 1932)  
*Landscape I (Landschaft I)*, 1971  
Color heliogravure on paper  
Museum purchase (75.78)





Claire Van Vliet (Canadian, b. 1933)

*Stormlight*, 1974

Lithograph on paper

Published by Lakeside Studio, Lakeside, Michigan

Gift of Dr. and Mrs. Frederick P. Nause (78.91)



Richard Aberle Florsheim (American, 1916–79)

*The Wanderer*, 1975

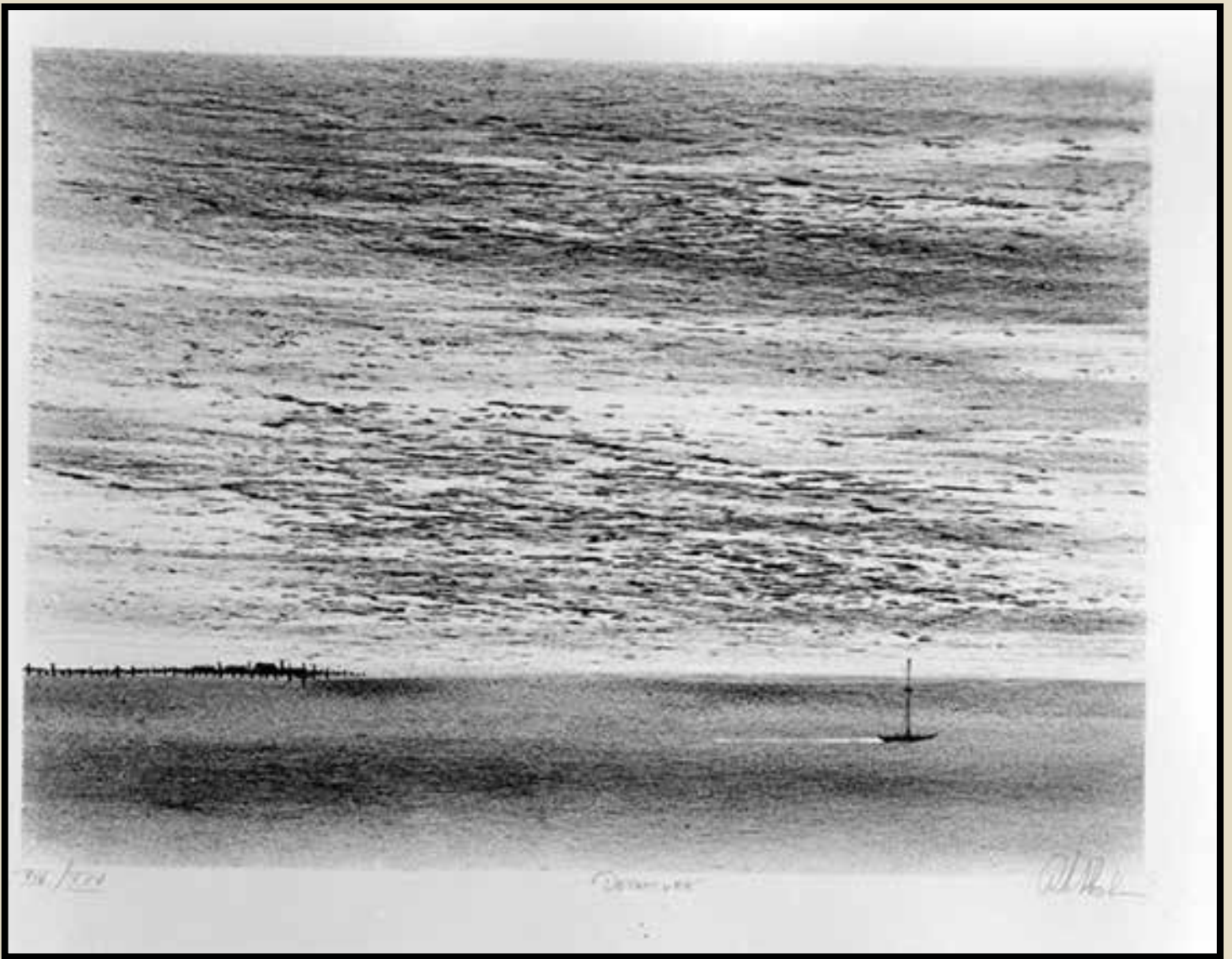
Lithograph on paper

Printed by Landfall Press, Santa Fe, New Mexico

Published by Lakeside Studio, Lakeside, Michigan

Gift of Dr. and Mrs. Christopher A. Graf (75.107)





Richard Aberle Florsheim (American, 1916–79)  
*Departure*, 1977  
Lithograph on paper  
Printed by Landfall Press, Santa Fe, New Mexico  
Gift of Dr. and Mrs. Christopher A. Graf (78.207)



Geri Della Rocca de Candal (Italian, b. 1942)

*Piazza San Marco - Venice (Piazza San Marco - Venezia)*, 1977

From the series *Photographs of Venice in Winter (Fotografie di Venezia in inverno)*

Gelatin silver print on paper

Museum purchase (78.63)





Geri Della Rocca de Candali (Italian, b. 1942)

*Basin of San Marco from the Island of San Giorgio - Venice (Bacino di S. Marco dall'Isola di S. Giorgio - Venezia)*, 1977

From the series *Photographs of Venice in Winter (Fotografie di Venezia in inverno)*

Gelatin silver print on paper

Museum purchase (78.67)